

# CHASING THE RHYTHM

2024/MARCH



PROFESSIONAL CAR  
AUDIO SYSTEMS



FOR-X

BuRock

MoBass

GLOBAL  
CAR AUDIO  
BRANDS

# CAR AUDIO MANUFACTURER



Certified Quality



# AMPLIFIER & DSP

FOR-X

## XAQ8-6.70DSP DSP + CLASS AB AMPLIFIER

OUTPUT SIGNAL: 6 LOUDSPEAKER OUTPUT, 2 RCA OUTPUT  
INPUT SIGNAL: RCA, HIGH-LEVEL, OPTICAL, BLUETOOTH,  
U DISK SIGNAL INPUT  
DSP AMPLIFIER



## XAQ-812DSP PRO

OUTPUT SIGNAL: 12CH RCA AUDIO SIGNAL  
INPUT SIGNAL: RCA, HIGH-LEVEL, OPTICAL,  
BLUETOOTH, U DISK SIGNAL INPUT  
12 CH DSP



## XQ-48DSPV2 8 CH DSP + 4 CH AMPLIFIER

Active Range: >110dB  
S/N Ratio: >110dB  
Freq. Response: 20Hz-20K Hz  
Input Imp.: Low level 20K OHM,  
High level 240 OHM  
RMS Power @4 OHM 4CHx25W,  
Peak 4CHx60W



## XA-140.4MD

RMS POWER @ 4 OHM 140x4CH  
RMS POWER @ 2 OHM 170x4CH  
RMS POWER @ 4 OHM 320x2CH



## XQ-6PP PLUG&PLAY | CLASS AB

RMS POWER @4 OHM 35Wx4CH + 80Wx2CH  
RMS POWER @2 OHM 50Wx4CH + 120Wx2CH  
INPUT IMPEDANCE 22K OHMS  
S/N RATIO 100dB - FREQ. RESPONSE 10Hz-50K Hz



## XAB-280.2

RMS POWER @40HM 250Wx2CH  
RMS POWER @20HM 450Wx2CH  
RMS POWER MONO @40HM 900Wx1CH



## XAQ-2.150SQ

RMS POWER @4 OHM 150Wx2CH  
RMS POWER @2 OHM 200Wx2CH  
RMS POWER @4 OHM BRIDGED 380Wx1CH



## XAQ-4.80SQ

RMS POWER @4 OHM 80Wx4CH  
RMS POWER @2 OHM 105Wx4CH  
RMS POWER @4 OHM BRIDGED 240Wx2CH



EVERY JOURNEY IS  
SPECIAL WITH FOR-X

# AMPLIFIER

FOR-X



### XC-5000.1

RMS POWER @4 OHM 1700Wx1CH  
RMS POWER @2 OHM 2900Wx1CH  
RMS POWER @1 OHM 5000Wx1CH



### XC-1500.2

RMS POWER @4OHM 650Wx2CH  
RMS POWER @20HM 1100Wx2CH  
RMS POWER @10HM 1500Wx2CH  
RMS POWER BRIDGED @40HM 2200Wx1CH  
RMS POWER BRIDGED @20HM 3000Wx1CH



### XC-1000.4

RMS POWER @40HM 500Wx4CH  
RMS POWER @20HM 800Wx4CH  
RMS POWER @10HM 1000Wx4CH  
RMS POWER BRIDGED @40HM 1600Wx2CH  
RMS POWER BRIDGED @20HM 2000Wx2CH



### XC-2500.5

RMS POWER @40HM 130Wx4CH + 680W  
RMS POWER @20HM 200Wx4CH + 1100W  
RMS POWER @10HM 1700Wx1CH FOR CH5  
RMS POWER BRIDGED @40HM 400Wx2CH + 680W

WATCH OUT FOR  
THE SOUND



# AMPLIFIER

FOR-X

## XAD-12000.05

RMSPower @4 OHM 2600Wx1CH  
RMSPower @2 OHM 5000Wx1CH  
RMSPower @1 OHM 8100Wx1CH  
RMS POWER @0.5 OHM 12000Wx1CH



## XAD-12000.1

RMSPower @4 OHM 3900Wx1CH  
RMSPower @2 OHM 7300Wx1CH  
RMS POWER @1 OHM 12000Wx1CH



## XAD-10000.1D

RMS POWER @4 OHM 5200Wx1CH  
RMS POWER @2 OHM 8100Wx1CH  
RMS POWER @1 OHM 10000Wx1CH



# AMPLIFIER

FOR-X

## XAD-1600.2D

RMS POWER @4 OHM 600Wx2CH  
RMS POWER @2 OHM 1000Wx2CH  
RMS POWER @1 OHM 1500Wx2CH  
RMS POWER @4 OHM 2000Wx1CH  
RMS POWER @2 OHM 3000Wx1CH



## XAD-310.4D

RMS POWER @4 OHM 300Wx4CH  
RMS POWER @2 OHM 550Wx4CH  
RMS POWER @4 OHM 1000Wx2CH



## XAD-3100.1D

RMS POWER @4 OHM 890Wx1CH  
RMS POWER @2 OHM 1750Wx1CH  
RMS POWER @1 OHM 3000Wx1CH



## XAD-5100.1D

RMS POWER @4 OHM 1600Wx1CH  
RMS POWER @2 OHM 3200Wx1CH  
RMS POWER @1 OHM 5000Wx1CH



## XAD-8100.1D

RMS POWER @4 OHM 2500Wx1CH  
RMS POWER @2 OHM 4800Wx1CH  
RMS POWER @1 OHM 8000Wx1CH



# AMPLIFIER

FOR-N



**XAE-600.1D**  
RMS POWER @4 OHM 200Wx1CH  
RMS POWER @2 OHM 400Wx1CH  
RMS POWER @1 OHM 600Wx1CH



**XAE-1200.1D**  
RMS POWER @4 OHM 400Wx1CH  
RMS POWER @2 OHM 600Wx1CH  
RMS POWER @1 OHM 1200Wx1CH  
**24V AVAILABLE**



**XAE-604**  
RMS POWER @4 OHM 60Wx4CH  
RMS POWER @2 OHM 100Wx4CH  
RMS POWER @4 OHM 180Wx2CH



**XAE-804**  
RMS POWER @4 OHM 80Wx4CH  
RMS POWER @2 OHM 120Wx4CH  
RMS POWER @4 OHM 240Wx2CH  
**24V AVAILABLE**



**XAE-4000.5**  
RMS POWER @4 OHM 70Wx4CH+200W  
RMS POWER @2 OHM 100Wx4CH+350W  
RMS POWER @4 OHM 260Wx2CH  
**24V AVAILABLE**

# AMPLIFIER

FOR-N



**XAM-2200.1D**  
RMS POWER @4 OHM 700Wx1CH  
RMS POWER @2 OHM 1200Wx1CH  
RMS POWER @1 OHM 2200Wx1CH



**XAM-4500.5**  
RMS POWER @4 OHM 80Wx4CH + 300W [1 OHM]  
RMS POWER @2 OHM 120Wx4CH  
RMS POWER @4 OHM 240Wx2CH



**XAM-200.4**  
RMS POWER @4 OHM 200Wx4CH  
RMS POWER @2 OHM 290Wx4CH  
RMS POWER @4 OHM 580Wx2CH

# AMPLIFIER

FOR-X



**XAP-1800.1D**  
RMS POWER @4 OHM 600Wx1CH  
RMS POWER @2 OHM 1200Wx1CH  
RMS POWER @1 OHM 1800Wx1CH  
WITH BASS CONTROL



**XAP-2500.1D**  
RMSPOWER @4 OHM 800Wx1CH  
RMSPOWER @2 OHM 1500Wx1CH  
RMS POWER @1 OHM 2500Wx1CH



**XAP-7000.1D**  
RMSPOWER @4 OHM 2200Wx1CH  
RMSPOWER @2 OHM 4000Wx1CH  
RMS POWER @1 OHM 7000Wx1CH

# AMPLIFIER

FOR-X



**XAP-200.4AB**  
RMSPOWER @4 OHM 220Wx4CH  
RMSPOWER @2 OHM 320Wx4CH  
RMS POWER @4 OHM 660Wx2CH



**XAP-80.4AB**  
RMS POWER @4 OHM 80Wx4CH  
RMS POWER @2 OHM 120Wx4CH  
RMS POWER @4 OHM 250Wx2CH  
WITH BASS CONTROL



**XAP-350.4D**  
RMS POWER @4 OHM 350Wx4CH  
RMS POWER @2 OHM 600Wx4CH  
RMS POWER @4 OHM 1200Wx2CH



**XAP-200.4D**  
RMS POWER @4 OHM 200Wx4CH  
RMS POWER @2 OHM 350Wx4CH  
RMS POWER @4 OHM BRIDGED 750Wx2CH





WHEN THE NIGHT  
COMES

# AMPLIFIER

**FOR-X**



## **XQ-4A**

POWER AMPLIFIER FOR ANDROID UNITS  
N POWER OUTPUT @ 4 OHM 30W x 4CH  
MAX POWER 50W x 4CH  
FREQ. RESPONSE 20-20K Hz  
SIGNAL TO NOISE RATIO 91dB



## **XQ-6A**

POWER AMPLIFIER FOR ANDROID UNITS  
N POWER OUTPUT @ 4 OHM 30W x 6CH  
MAX POWER 50W x 6CH  
FREQ. RESPONSE 20-20K Hz  
SIGNAL TO NOISE RATIO 91dB



## **XQ-75.4A**

POWER AMPLIFIER FOR ANDROID UNITS  
N POWER @4 OHM 75W x 4CH  
MAX POWER @4 OHM 150W x 4CH  
FREQ. RESPONSE 20-20K Hz

# AMPLIFIER

FOR-N



## **XDQ-80.4D**

RMS POWER @4 OHM 80Wx4CH  
RMS POWER @2 OHM 130Wx4CH  
RMS POWER @4 OHM 260Wx2CH  
HI-LEVEL INPUT



## **XDQ-125.4D**

RMS POWER @4 OHM 125Wx4CH  
RMS POWER @2 OHM 180Wx4CH  
RMS POWER @4 OHM 360Wx2CH  
HI-LEVEL INPUT



## **XDQ-225.2D**

RMS POWER @4 OHM 225Wx2CH  
RMS POWER @2 OHM 325Wx2CH  
RMS POWER @4 OHM 650Wx1CH  
RMS PEAK POWER @4 OHM 650Wx2CH  
AUTO TURN ON  
HI-LEVEL INPUT



## **XDQ-225.4D**

RMS POWER @4 OHM 225Wx4CH  
RMS POWER @2 OHM 300Wx4CH  
RMS POWER @4 OHM 600Wx2CH  
HI-LEVEL INPUT



## **XDQ-300.4D**

RMS POWER @4 OHM 300Wx4CH  
RMS POWER @2 OHM 400Wx4CH  
RMS POWER @4 OHM 800Wx2CH  
HI-LEVEL INPUT

# AMPLIFIER

FOR-N



## **XDQ-400.2D**

RMS POWER @4 OHM 400Wx2CH  
RMS POWER @2 OHM 600Wx2CH  
RMS POWER @4 OHM 1200Wx1CH  
HI-LEVEL INPUT



## **XDQ-550.2D**

RMSPower @4 OHM 550Wx2CH  
RMSPower @2 OHM 850Wx2CH  
RMSPower @4 OHM 1700Wx1CH  
RMS PEAK POWER @4 OHM 1700Wx2CH  
HI-LEVEL INPUT



## **XDQ-1000.1FD**

RMS POWER @4 OHM 665Wx1CH  
RMS POWER @2 OHM 1000Wx1CH  
HI-LEVEL INPUT



## **XDQ-1000.5D**

RMS POWER @4 OHM 100Wx4CH + 250W  
RMS POWER @2 OHM 150Wx4CH + 400W  
RMS POWER @4 OHM 300Wx2CH  
HI-LEVEL INPUT



## **XDQ-1200.1D**

RMS POWER @4 OHM 480Wx1CH  
RMS POWER @2 OHM 745Wx1CH  
RMS POWER @1 OHM 1120Wx1CH  
HI-LEVEL INPUT

# MIDRANGE

**FOR-X**



**XMD-520**  
8" MIDRANGE SPEAKER  
300W RMS POWER / 600W MAX POWER  
97dB SENSITIVITY  
100-10K Hz FREQ. RESPONSE



**XMD-525**  
10" MIDRANGE SPEAKER  
500W RMS POWER / 1000W MAX POWER  
100dB SENSITIVITY  
73-9.5K Hz FREQ. RESPONSE



**XMD-308**  
8" MIDRANGE SPEAKER  
250W RMS POWER / 500W MAX POWER  
90-10K Hz FREQ. RESPONSE  
95dB SENSITIVITY



**XMD-620 NEO**  
8" NEO MIDRANGE SPEAKER  
250W RMS POWER / 500W MAX POWER  
110-11.5K Hz FREQ. RESPONSE  
103dB SENSITIVITY



**XMD-625 NEO**  
10" NEO MIDRANGE SPEAKER  
350W RMS POWER / 700W MAX POWER  
110-11.5K Hz FREQ. RESPONSE  
105dB SENSITIVITY



**XMD-1716 NEO**  
6.5" NEO MIDRANGE SPEAKER  
150W RMS POWER / 300W MAX POWER  
96.8dB SENSITIVITY  
150-10K Hz FREQ. RESPONSE



**XMD-1720 NEO**  
8" NEO MIDRANGE SPEAKER  
250W RMS POWER / 500W MAX POWER  
95dB SENSITIVITY  
94-10K Hz FREQ. RESPONSE



**XMD-1725 NEO**  
10" NEO MIDRANGE SPEAKER  
300W RMS POWER / 600W MAX POWER  
99.2dB SENSITIVITY  
60-7K Hz FREQ. RESPONSE



**BASS ZONE**

# MIDRANGE & MIDBASS

FOR-X



**XMB-8N**  
8" NEO MIDBASS SPEAKER  
200W RMS POWER / 400W MAX POWER  
92.6dB SENSITIVITY  
68-7.5K Hz FREQ. RESPONSE



**XMB-10N**  
10" NEO MIDBASS SPEAKER  
400W RMS POWER / 800W MAX POWER  
96dB SENSITIVITY  
62-5K Hz FREQ. RESPONSE



**XMB-12N**  
12" NEO MIDBASS SPEAKER  
500W RMS POWER / 1000W MAX POWER  
97dB SENSITIVITY  
50-4K Hz FREQ. RESPONSE



**XFR-65**  
6.5" MIDBASS SPEAKER  
150W RMS POWER / 300W MAX POWER  
92dB SENSITIVITY  
75-9.5K Hz FREQ. RESPONSE



**XFR-80**  
8" MIDBASS SPEAKER  
180W RMS POWER / 360W MAX POWER  
95dB SENSITIVITY  
85-8.7K Hz FREQ. RESPONSE



**XMD-1510N**  
4" NEO MIDRANGE SPEAKER  
50W RMS POWER / 120W MAX POWER  
92dB SENSITIVITY  
230-15K Hz FREQ. RESPONSE



**XMD-1513N**  
5.25" NEO MIDRANGE SPEAKER  
70W RMS POWER / 160W MAX POWER  
93dB SENSITIVITY  
200-15K Hz FREQ. RESPONSE



**XMD-1516N**  
6.5" NEO MIDRANGE SPEAKER  
70W RMS POWER / 160W MAX POWER  
97dB SENSITIVITY  
125-15K Hz FREQ. RESPONSE

# MIDRANGE

FOR-X



**XMD-82 PRO**  
8" MIDRANGE SPEAKER  
200W RMS POWER / 400W MAX POWER  
97dB SENSITIVITY  
101-20K Hz FREQ. RESPONSE



**XMD-1520N**  
8" NEO MIDRANGE SPEAKER  
80W RMS POWER / 300W MAX POWER  
98dB SENSITIVITY  
100-10K Hz FREQ. RESPONSE



**XMD-1010N**  
4" NEO MIDRANGE SPEAKER  
60W RMS POWER / 140W MAX POWER  
96dB SENSITIVITY  
150-20K Hz FREQ. RESPONSE



**XMD-1013N**  
5.25" NEO MIDRANGE SPEAKER  
70W RMS POWER / 160W MAX POWER  
93dB SENSITIVITY  
140-20K Hz FREQ. RESPONSE



**XMD-1016N**  
6.5" NEO MIDRANGE SPEAKER  
70W RMS POWER / 160W MAX POWER  
94dB SENSITIVITY  
120-20K Hz FREQ. RESPONSE



**XMD-1020N**  
8" NEO MIDRANGE SPEAKER  
80W RMS POWER / 180W MAX POWER  
94dB SENSITIVITY  
85-20K Hz FREQ. RESPONSE



**XMD-1069N**  
6x9" NEO MIDRANGE SPEAKER  
80W RMS POWER / 180W MAX POWER  
94dB SENSITIVITY  
90-18K Hz FREQ. RESPONSE

# MIDRANGE

FOR-X



**XMD-800N**  
8" (20CM) NEO MIDRANGE  
150W RMS POWER / 300W MAX POWER  
93.5dB SENSITIVITY  
90-14.8K Hz FREQ. RESPONSE



**XMD-650N**  
6.5" (16CM) NEO MIDRANGE  
100W RMS POWER / 200W MAX POWER  
92dB SENSITIVITY  
120-15.6K Hz FREQ. RESPONSE



**XMD-220N**  
8" (20CM) NEO MIDRANGE SPEAKER  
150W RMS POWER / 300W MAX POWER  
95.2dB SENSITIVITY  
95-11K Hz FREQ. RESPONSE



**XMD-216N**  
6.5" (16CM) NEO MIDRANGE SPEAKER  
100W RMS POWER / 200W MAX POWER  
92.6dB SENSITIVITY  
146-10K Hz FREQ. RESPONSE



**XMD-206**  
6.5" (16CM) MIDRANGE SPEAKER  
150W RMS POWER / 300W MAX POWER  
96dB SENSITIVITY  
90-6.5K Hz FREQ. RESPONSE



**XMD-206N**  
6.5" (16CM) NEO MIDRANGE SPEAKER  
180W RMS POWER / 360W MAX POWER  
97.5dB SENSITIVITY  
145-12.2K Hz FREQ. RESPONSE



**XMD-208**  
8" (20CM) MIDRANGE SPEAKER  
200W RMS POWER / 400W MAX POWER  
97dB SENSITIVITY  
85-9.5K Hz FREQ. RESPONSE



**XMD-208N**  
8" (20CM) NEO MIDRANGE SPEAKER  
200W RMS POWER / 400W MAX POWER  
98.5dB SENSITIVITY  
95-13.5K Hz FREQ. RESPONSE

# MIDRANGE

FOR-X

**XMD-3065**  
6.5" MIDRANGE SPEAKER  
100W RMS POWER / 200W MAX POWER  
92dB SENSITIVITY  
163-9.8K Hz FREQ. RESPONSE



**XMD-3069**  
6x9" MIDRANGE SPEAKER  
150W RMS POWER / 300W MAX POWER  
95dB SENSITIVITY  
80-12K Hz FREQ. RESPONSE



**XMD-3080**  
8" MIDRANGE SPEAKER  
150W RMS POWER / 300W MAX POWER  
95dB SENSITIVITY  
128-8.7K Hz FREQ. RESPONSE



**XMD-3052**  
5.25" MIDRANGE SPEAKER  
70W RMS POWER / 140W MAX POWER  
90dB SENSITIVITY  
176-15.2K Hz FREQ. RESPONSE



**XMD-4020N**  
8" NEO MIDRANGE SPEAKER  
200W RMS POWER / 400W MAX POWER  
99.6dB SENSITIVITY  
120-6K Hz FREQ. RESPONSE

# SUBWOOFER

FOR-X



**XW-410 D2 & D4**  
10" SUBWOOFER  
1200W RMS POWER  
2400W MAX POWER



**XW-412 D2 & D4**  
12" SUBWOOFER  
1200W RMS POWER  
2400W MAX POWER



**XW-415 D2 & D4**  
15" SUBWOOFER  
1200W RMS POWER  
2400W MAX POWER



**XW-418 D2 & D4**  
18" SUBWOOFER  
1200W RMS POWER  
2400W MAX POWER



# SUBWOOFER

FOR-X



**X-815 NEO D1 & D2**  
15" NEO SUBWOOFER  
3000W RMS POWER  
6000W MAX POWER



**XPA-18PRO**  
18" (46CM) SUBWOOFER  
1000W RMS POWER  
2000W MAX POWER  
8 OHM IMPEDANCE



**XW-08**  
8" SUBWOOFER  
200W RMS POWER  
400W MAX POWER

# SUBWOOFER

**FOR-X**



**XW-2065 D2 & D4**  
6.5" SUBWOOFER  
250W RMS POWER  
500W MAX POWER



**XW-2008 D2 & D4**  
8" SUBWOOFER  
400W RMS POWER  
800W MAX POWER



**XW-2410 D2 & D4**  
10" SUBWOOFER  
700W RMS POWER  
1400W MAX POWER



**XW-2412 D2 & D4**  
12" SUBWOOFER  
700W RMS POWER  
1400W MAX POWER



**XW-2415 D2 & D4**  
5" SUBWOOFER  
700W RMS POWER  
1400W MAX POWER



**XW-2412S4**  
12" (30CM) SUBWOOFER  
700WRMS POWER  
1400WMAX POWER  
4 OHM IMPEDANCE

UNEXPECTED  
JOURNEY



# SUBWOOFER

**FOR-X**



**X-108S**  
20CM SUBWOOFER  
200W RMS POWER  
400W MAX POWER  
4 OHM IMPEDANCE



**X-112S**  
30CM SUBWOOFER  
250W RMS POWER  
1000W MAX POWER  
4 OHM IMPEDANCE



**XW-208S**  
8" (20CM) SUBWOOFER  
200W RMS POWER  
400W MAX POWER  
83.4dB SENSITIVITY  
30-300 Hz FREQ. RESPONSE  
4 OHM IMPEDANCE



**XW-1230S**  
12" (30CM) SUBWOOFER  
250W RMS POWER  
1000W MAX POWER  
88dB SENSITIVITY  
30-300 Hz FREQ. RESPONSE  
4 OHM IMPEDANCE



**XW-912 D1 & D2**  
12" (30CM) SUBWOOFER  
3000W RMS POWER  
6000W MAX POWER  
D1 & D2 OHMS IMPEDANCE



**XW-915 D1 & D2**  
15" (38CM) SUBWOOFER  
3000W RMS POWER  
6000W MAX POWER  
D1 & D2 OHMS IMPEDANCE

# SUBWOOFER

**FOR-X**



**XW-510 D1 & D2**  
10" (25CM) SUBWOOFER  
1500W RMS POWER  
3000W MAX POWER  
80.5dB SENSITIVITY  
D1 & D2 OHMS IMPEDANCE



**XW-512 D1 & D2**  
12" (30CM) SUBWOOFER  
1500W RMS POWER  
3000W MAX POWER  
83.6dB SENSITIVITY  
D1 & D2 OHMS IMPEDANCE



**XW-515 D1 & D2**  
15" (38CM) SUBWOOFER  
1500W RMS POWER  
3000W MAX POWER  
86.3dB SENSITIVITY  
D1 & D2 OHMS IMPEDANCE



**XW-3010 D1 & D2**  
10" (25CM) SUBWOOFER  
3" USA VOICE COIL  
1750W RMS POWER  
3500W MAX POWER  
42-400 Hz FREQ. RESPONSE  
D2 & D4 OHMS



**XW-3012 D1 & D2**  
12" (30CM) SUBWOOFER  
3" USA VOICE COIL  
1750W RMS POWER  
3500W MAX POWER  
39-400 Hz FREQ. RESPONSE  
D2 & D4 OHMS



**XW-3015 D1 & D2**  
15" (38CM) SUBWOOFER  
3" USA VOICE COIL  
1750W RMS POWER  
3500W MAX POWER  
35-400 Hz FREQ. RESPONSE  
D2 & D4 OHMS



WHO LET  
THE BASS  
OUT



# COAXIAL

FOR-X



**X-3010C**  
4" COAXIAL SPEAKER  
35W RMS POWER / 70W MAX POWER  
86dB SENSITIVITY  
105-20K Hz FREQ. RESPONSE



**X-3013C**  
5.25" COAXIAL SPEAKER  
40W RMS POWER / 80W MAX POWER  
86dB SENSITIVITY  
105-20K Hz FREQ. RESPONSE

**X-3016C**  
6.5" COAXIAL SPEAKER  
50W RMS POWER / 100W MAX POWER  
89.3dB SENSITIVITY  
58-20K Hz FREQ. RESPONSE

**X-3046C**  
4x6" COAXIAL SPEAKER  
35W RMS POWER / 75W MAX POWER  
87dB SENSITIVITY  
80-20K Hz FREQ. RESPONSE



# COAXIAL

FOR-X



**XC-310**  
RMS Power: 35W  
MAX Power: 105W  
Freq. Response: 100-20KHz  
Sensitivity: 86dB/W/M  
Magnet: 5.3oz  
Woofer: Injection Cone  
Midrange TW: 20mm PEI Dome



**XC-313**  
RMS Power: 40W  
MAX Power: 120W  
Freq. Response: 80-20KHz  
Sensitivity: 86dB/W/M  
Magnet: 13oz  
Woofer: Injection Cone  
Midrange TW: 20mm PEI Dome



**XC-316**  
RMS Power: 50W  
MAX Power: 150W  
Freq. Response: 70-20KHz  
Sensitivity: 88dB/W/M  
Magnet: 13oz  
Woofer: Injection Cone  
Midrange TW: 20mm PEI Dome



**XC-369**  
RMS Power: 80W  
MAX Power: 240W  
Freq. Response: 45-20KHz  
Sensitivity: 88dB/W/M  
Magnet: 20oz  
Woofer: Injection Cone  
Midrange: 58mm  
Tweeter: 30mm Mylar Dome



**XCX-502SL**  
5.25" (13CM) SLIM COAXIAL SPEAKER  
30W RMS POWER / 60W MAX POWER  
86dB SENSITIVITY  
78-20K Hz FREQ. RESPONSE  
4 OHM IMPEDANCE



**XCX-602SL**  
6.5" (16CM) COAXIAL SPEAKER  
35W RMS POWER / 70W MAX POWER  
88dB SENSITIVITY  
56-20K Hz FREQ. RESPONSE  
4 OHM IMPEDANCE



FUN MODE  
ON THE ROAD

# PLUG AND PLAY

FOR-X



**XQ-402** BMW REAR  
4" COAXIAL SPEAKER  
60WRMS POWER / 120W MAX POWER  
88dB SENSITIVITY  
100-20KHz FREQ. RESPONSE  
4 OHM IMPEDANCE



**XQ-40C** BMW FRONT SET  
4" 2-WAY COMPONENT SPEAKER  
30W RMS POWER / 60W MAX POWER  
85dB SENSITIVITY  
100-10KHz FREQ. RESPONSE  
4 OHM IMPEDANCE



**XQ-452** BMW FRONT  
4.5" COAXIAL SPEAKER  
60WRMS POWER / 120W MAX POWER  
88dB SENSITIVITY  
100-20KHz FREQ. RESPONSE  
4 OHM IMPEDANCE

# PLUG AND PLAY

FOR-X



**XQ-45C** BMW FRONT SET  
4.5" 2-WAY COMPONENT SET  
30WRMS POWER / 60W MAX POWER  
85dB SENSITIVITY  
100-12KHz FREQ. RESPONSE  
4 OHM IMPEDANCE



**XQ-82MB** MERCEDES-BENZ WOOFER (2022+)  
8" SUBWOOFER  
100WRMS POWER / 200W MAX POWER  
88dB SENSITIVITY  
43-2KHz FREQ. RESPONSE  
20HM IMPEDANCE



**XQ-8BMW** Suitable for BMW and MINI  
8" SOUND QUALITY SUBWOOFER  
100W RMS POWER / 200W MAX POWER  
87dB SENSITIVITY  
48-2K Hz FREQ. RESPONSE



**XQ-8MB** MERCEDES COMPATIBLE  
8" SUBWOOFER  
100WRMS POWER / 200W MAX POWER  
88dB SENSITIVITY  
43-2KHz FREQ. RESPONSE  
20HM IMPEDANCE

# COMPONENT SET

FOR-X

**XQ-65.2 COMPONENT SET**  
 6.5" COMPONENT SYSTEM  
 60W RMS POWER / 180W MAX POWER  
 93dB SENSITIVITY  
 50-20K Hz FREQ. RESPONSE  
 4 OHM IMPEDANCE

**TWEETER**  
 15W RMS POWER / 30W MAX POWER  
 90dB SENSITIVITY  
 1300-20K Hz FREQ. RESPONSE  
 4 OHM IMPEDANCE

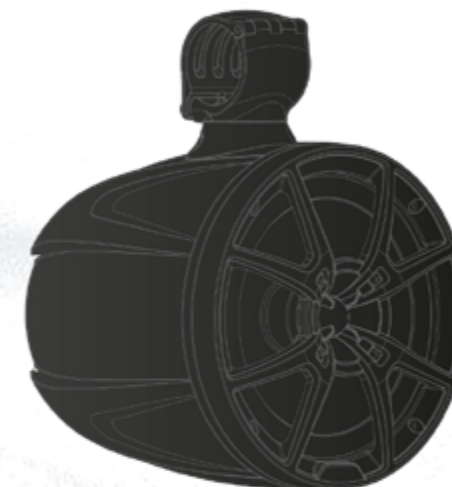


# MARINE AUDIO

FOR-X



**XMC-65RGB BMW FRONT SET**  
 6.5" RGB LED MARINE SPEAKER  
 100W RMS POWER / 200W MAX POWER  
 89.2dB SENSITIVITY  
 55-20K Hz FREQ. RESPONSE  
 4 OHM IMPEDANCE

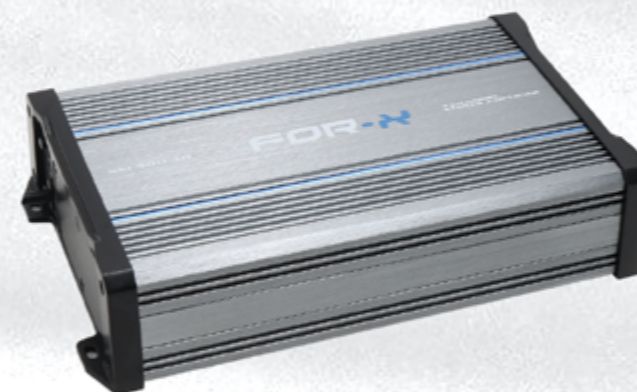


**XMC-802RGB 8" MARINE SPEAKER WITH RGB LED**  
 8" Marine Loudspeaker with RGB LED Light  
 High Strength Aluminum Basket  
 High Temperature Kccaw Voice Coil  
 PP Waterproof Cone with Rubber Edge  
 Ferrite Magnet Motor  
 600 Watts Max Power  
 Sensitivity 92 dB  
 Frequency Response 43-22kHz  
 Nominal Impedance 4 Ohms  
 RGB LED Light with Controller

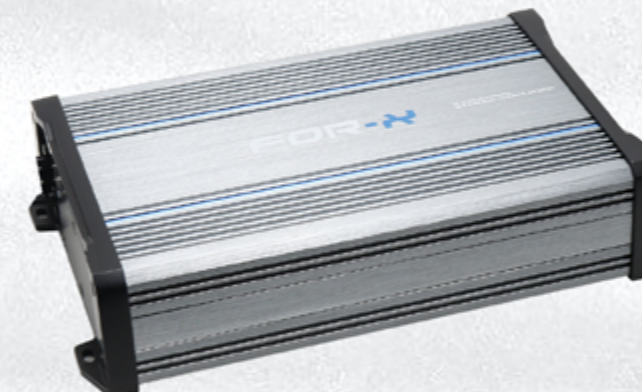


**XM-450BT Waterproof MP3 Player**  
 3" Color Display High Performance  
 FM/AM Radio  
 USB / AUX Input  
 RCA OUT  
 Video IN/OUT  
 4X50W Max Output Power

**SPECIAL TWEETER DESIGN ON GRILL**  
 Special Waterproof Design Tweeter  
 25.4 High Temperature Kccaw Voice Coil  
 Neodymium Magnet Motor  
 200 Watts Max Power  
 Sensitivity 105dB  
 Nominal Impedance 8 Ohms



**XM-300.4D MARINE DIGITAL AMPLIFIER**  
 RMS power @ 4 ohm : 300W x 4  
 RMS power @ 2 ohm : 420W x 4  
 RMS power @ 1 ohm : -  
 RMS power @ 4 ohm Bridged : 900W x 2  
 Amplifier Type : Class D



**XM-1500.5D MARINE DIGITAL AMPLIFIER**  
 RRMS power @ 4 ohm : CH1-CH4: 100W x 4 / CH5: 500W x 1  
 RMS power @ 2 ohm : CH1-CH4: 160W x 4 / CH5: 800W x 1  
 RMS power @ 1 ohm : -  
 RMS power @ 4 ohm Bridged : CH1-CH4: 310W x 2  
 Amplifier Type : Class D

# SUPERIOR DSP HEADUNIT

**FOR-N**

## XQ-700DSP



- 2-LINE VA-LCD DISPLAY
- MULTI COLOR KEY LIGHT
- DYNAMIC BACKGROUND LIGHTING
- SUBWOOFER CONTROL
- BLUETOOTH 5.0
- DSP [DIGITAL SOUND PROCESSOR]
- EQ 28 BAND, 8 PRESET
- XBASS / XOVER
- 2-WAY NETWORK / 3-WAY NETWORK
- PRE-OUT 8CHx4V
- MAX POWER 60Wx4CH
- RADIO PRESET 18FM, 12AM, RDS
- USB 2A CHARGE
- MP3/WMA/AAC/FLAC/APE AUDIO FORMAT
- COAXIAL OUTPUT
- APP CONTROL
- INTERNAL & EXTERNAL MICROPHONE

## XQ-710DSP



## XQ-728DSP



## XQ-7450DSP



- 2-LINE VA-LCD DISPLAY
- MULTI COLOR KEY LIGHT
- DYNAMIC BACKGROUND LIGHTING
- SUBWOOFER CONTROL
- BLUETOOTH 5.0
- DSP [DIGITAL SOUND PROCESSOR]
- EQ 28 BAND, 8 PRESET
- XBASS / XOVER
- 2-WAY NETWORK / 3-WAY NETWORK
- PRE-OUT 8CHx4V
- MAX POWER 100Wx4CH
- RADIO PRESET 18FM, 12AM, RDS
- USB 2A CHARGE
- MP3/WMA/AAC/FLAC/APE AUDIO FORMAT
- COAXIAL OUTPUT
- APP CONTROL
- INTERNAL & EXTERNAL MICROPHONE

## XQ-7452DSP



EXCITING  
SOUNDS

# TWEETER

FOR-N

## XTH-2 HORN

WHITE-RED-YELLOW-BLACK-GREEN HORN



## TX-262

50W RMS POWER / 100W MAX POWER  
92dB SENSITIVITY  
2K Hz-20K Hz FREQ. RESPONSE  
4 OHM IMPEDANCE



## TX-80F

4.5" PRO TWEETER  
75W RMS POWER / 150W MAX POWER  
106dB SENSITIVITY  
1.5K-20K Hz FREQ. RESPONSE



## TX-29B

2" TWEETER  
35W RMS POWER / 150W MAX POWER  
FREQ. RESPONSE 5K Hz-22K Hz  
SENSITIVITY 91dB / 4 OHM IMPEDANCE  
SILK CONE / 25mm VOICE COIL  
ALUMINUM BASKET



## TX-29G

2" TWEETER  
35W RMS POWER / 150W MAX POWER  
FREQ. RESPONSE 5K Hz-22K Hz  
SENSITIVITY 91dB / 4 OHM IMPEDANCE  
SILK CONE / 25mm VOICE COIL  
ALUMINUM BASKET



## TX-250

50W RMS POWER / 100W MAX POWER  
105dB SENSITIVITY  
2K-20K Hz FREQ. RESPONSE



## TX-75

HORN TWEETER  
400W RMS POWER / 800W MAX POWER  
126dB SENSITIVITY  
8 OHM IMPEDANCE



## TX-70

HORN TWEETER  
300W RMS POWER / 600W MAX POWER  
110dB SENSITIVITY  
8 OHM IMPEDANCE



## TX-65H

DRIVER HORN TWEETER  
100W RMS POWER / 200W MAX POWER  
106dB SENSITIVITY



## TX-61N

35W RMS POWER / 70W MAX POWER  
105dB SENSITIVITY  
2.5K-20KHz FREQ. RESPONSE



## TX-60N

100W RMS POWER / 200W MAX POWER  
105dB SENSITIVITY  
2K-20K Hz FREQ. RESPONSE



## TX-802

50W RMS POWER / 100W MAX POWER  
104dB SENSITIVITY  
2K-20K Hz FREQ. RESPONSE  
4 OHM IMPEDANCE

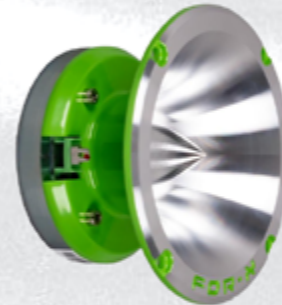


# TWEETER

FOR-N

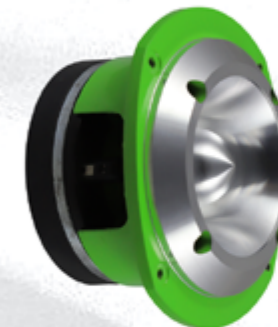
## TX-85N

4.5" PRO TWEETER  
75W RMS POWER / 150W MAX POWER  
107dB SENSITIVITY  
1.5K-20K Hz FREQ. RESPONSE



## TX-45

1.75" VC SUPER TWEETER  
300W RMS POWER / 600W MAX POWER  
101dB SENSITIVITY  
3.5K-20K Hz FREQ. RESPONSE



## TX-40

1" TWEETER  
30W RMS POWER  
92dB SENSITIVITY  
4K-20K Hz FREQ. RESPONSE  
4 OHM IMPEDANCE



## TX-30

50W RMS POWER / 100W MAX POWER  
90dB SENSITIVITY  
2K-20K Hz FREQ. RESPONSE



## TX-25T

60W RMS POWER / 180W MAX POWER  
90dB SENSITIVITY  
2K-20K Hz FREQ. RESPONSE

## TX-24

35W RMS POWER / 75W MAX POWER  
90dB SENSITIVITY  
3K-22K Hz FREQ. RESPONSE



## TX-22N

HORN TWEETER  
30W RMS POWER / 60W MAX POWER  
105dB SENSITIVITY  
2K-20K Hz FREQ. RESPONSE



## TX-20H

HORN TWEETER  
50W RMS POWER / 200W MAX POWER  
100dB SENSITIVITY  
2K-16K Hz FREQ. RESPONSE



## TX-19

50W RMS POWER / 100W MAX POWER  
92dB SENSITIVITY  
2K-20K Hz FREQ. RESPONSE



FOR-X

MAESTRO SERIES

MAESTRO SERIES

FOR-X



MAESTRO-1

RMS Output Power @2 Ohm 220Wx1CH  
RMS Output Power @4 Ohm 150Wx1CH  
THD <=0.05%  
Frequency Response 20Hz-20KHz[-3dB]  
Input Impedance 22k Ohm  
Signal to Noise Ratio 92dB  
Sensitivity 200mV-6V  
Supply Voltage 11-15V DC

MAESTRO-4

RMS POWER @40HM 150Wx4CH  
RMS POWER @20HM 225Wx4CH  
RMS POWER @40HM 450Wx2CH  
FREQ. RESPONSE 10Hz-30KHz  
S/N : >95dBA



MANAGE YOUR OWN SYMPHONY

# MAESTRO SERIES

FOR-X

The Maestro Series is a group of high-end products manufactured by FOR-X.

## MAESTRO-12D2

12" SQ SUBWOOFER  
400W RMS POWER / 800W MAX POWER  
87.5dB SENSITIVITY  
31-300 Hz FREQ. RESPONSE  
DUAL 2 OHMS



## MAESTRO-812DSP DSD

AUX Input: 2 Channel  
High Level Input: Up to 8 Channel  
Bluetooth/Optical/DSD Signal Input: Stereo  
Low Level[PRE] RCA Output: Up to 12 Channel  
RMS Power @ 4 OHM Class AB 20Wx4CH + Class D 100Wx8CH  
RMS Power @ 2 OHM 170Wx4CH [CH9/10/11/12 only]  
RMS Power @ 4 OHM 350Wx2CH [CH9/10/11/12 only]



## MAESTRO-DSD

Support Memory Card Capacity : 512GB  
LCD Display Screen Size : 2.4 Inch IPS TFT Display Resolution: 320x240  
S/N :  $\geq 110$ dB  
THD : 0.0005%  
Audio Format : MP3/WMA/WAV/APE/FLAC/ACC/OGG/AIFF DSD [DSF/DFF] 64-25  
Audio Bit Rate : WAV/APE/FLAC Maximum Support 24Bit 192KHz (921.6bps),  
DSD Maximum Support 1BIT DSD256 (11289.6bps)  
Adapter Box Power Supply : 12V (9-16V) Maximum Current: 500MA  
Optical Output : 4V Vp-p  
RCA Output : 2V RMS  
Size(LxWxH) : 50mmx100mmx18mm  
DAC : AKM AK4432



## MAESTRO-25

HI-END GRADE RCA CABLE  
ULTRA FLEXIBLE PVC COVER  
99.99% COPPER FOR CONDUCTOR  
COLOR CODED CONNECTORS  
HIGH SIGNAL TRANSDUCER  
5MT



# MAESTRO SERIES

FOR-X

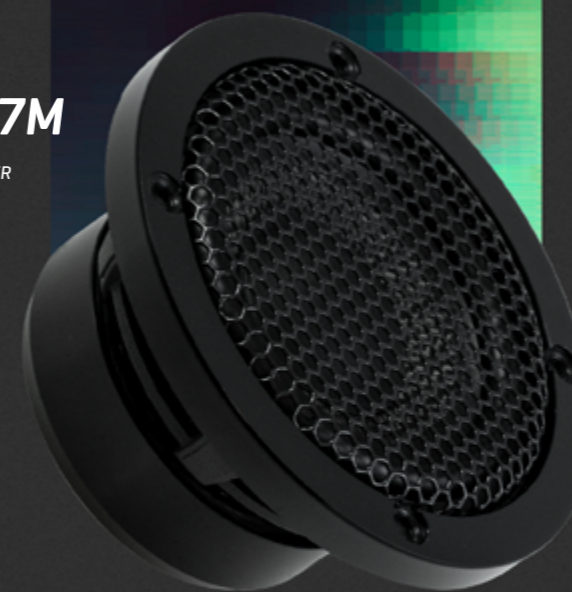
## MAESTRO-165W

6.5" SQ MIDBASS SPEAKER  
60W RMS POWER / 180W MAX POWER  
88dB SENSITIVITY  
55-20K Hz FREQ. RESPONSE  
4 OHM IMPEDANCE



## MAESTRO-77M

77mm SQ MIDRANGE  
30W RMS POWER / 90W MAX POWER  
82dB SENSITIVITY  
125-20K Hz FREQ. RESPONSE  
6 OHM IMPEDANCE





# MAESTRO SERIES

FOR-X

## MAESTRO-75F

75mm SQ NEO FULLRANGE  
30W RMS POWER / 90W MAX POWER  
86dB SENSITIVITY  
130-20K Hz FREQ. RESPONSE  
6 OHM IMPEDANCE



## MAESTRO-25T

SQ NEO TWEETER  
25W RMS POWER / 75W MAX POWER  
90dB SENSITIVITY  
2K-20K Hz FREQ. RESPONSE  
4 OHM IMPEDANCE



BREATHTAKING  
LISTENING EXPERIENCE

# AMPLIFIER



## MB-600.1

RMS POWER @1 OHM 600Wx1CH  
RMS POWER @2 OHM 400Wx1CH  
RMS POWER @4 OHM 200Wx1CH



## MB-600.4

RMS POWER @4 OHM 55Wx4CH  
RMS POWER @2 OHM 90Wx4CH  
RMS POWER @4 OHM 150Wx2CH  
WITH BASS CONTROL



## MB-800.4

RMS POWER @4 OHM 80Wx4CH  
RMS POWER @2 OHM 120Wx4CH  
RMS POWER @4 OHM 240Wx2CH  
WITH BASS CONTROL



## MB-3000.5

RMS POWER @4 OHM 70Wx4CH + 200W  
RMS POWER @2 OHM 130Wx4CH + 350W  
RMS POWER @4 OHM 260Wx2CH

# MIDRANGE & WOOFER



## MB-6

6.5" MIDRANGE SPEAKER  
80W RMS POWER / 200W MAX POWER  
94dB SENSITIVITY  
107-10K Hz FREQ. RESPONSE



## MB-8

8" MIDRANGE SPEAKER  
100W RMS POWER / 250W MAX POWER  
96dB SENSITIVITY  
95-10K Hz FREQ. RESPONSE



## MB-2512 D2 & D4

12" WOOFER  
800W RMS POWER / 1600W MAX POWER  
86dB SENSITIVITY  
D2 & D4 OHMS



## MB-2515 D2 & D4

15" (38CM) SUBWOOFER  
2.5" VOICE COIL, BLACK ALUMINUM  
BOBBIN, COPPER WIRE  
CARBON FIBER DUST CAP  
ALUMINUM DIE CAST BASKET  
800W RMS POWER / 1600W MAX POWER  
SENSITIVITY 87dB  
D2 & D4 OHMS

# COAXIAL



**MBC-10**  
4" (10CM) COAXIAL SPEAKER  
25W RMS POWER / 50W MAX POWER  
88dB SENSITIVITY  
120-20K Hz FREQ. RESPONSE  
4 OHM IMPEDANCE



**MBC-13**  
5.25" (13CM) COAXIAL SPEAKER  
30W RMS POWER / 60W MAX POWER  
88dB SENSITIVITY  
99-20K Hz FREQ. RESPONSE  
4 OHM IMPEDANCE



**MBC-16**  
6.5" (16CM) COAXIAL SPEAKER  
50W RMS POWER / 100W MAX POWER  
88dB SENSITIVITY  
88-20K Hz FREQ. RESPONSE  
4 OHM IMPEDANCE

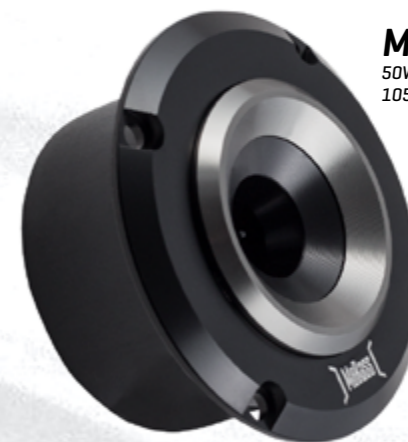


**MBC-69**  
6X9" COAXIAL SPEAKER  
60W RMS POWER / 120W MAX POWER  
88dB SENSITIVITY  
64-20K Hz FREQ. RESPONSE  
4 OHM IMPEDANCE

# TWEETER



**MBT-05**  
80W RMS POWER / 300W MAX POWER  
107dB SENSITIVITY



**MBT-04**  
50W RMS POWER / 300W MAX POWER  
105dB SENSITIVITY



**MBT-20**  
50W RMS POWER / 100W MAX POWER  
92dB SENSITIVITY



**MBT-02 NEO**  
50W RMS POWER / 100W MAX POWER  
105dB SENSITIVITY



**MBT-01TW**  
50W RMS POWER / 100W MAX POWER  
105dB SENSITIVITY

# SUBWOOFER



## MB-121S

30CM SUBWOOFER  
250W RMS POWER / 1000W MAX POWER  
86.1dB SENSITIVITY  
4 OHM IMPEDANCE



## MB-108

20CM SUBWOOFER  
200W RMS POWER / 400W MAX POWER  
82.3dB SENSITIVITY  
4 OHM IMPEDANCE



# CABINET

## FOR-X 16CM

16CM MDF CABINET  
[XW-6.5] 31.5x28.5x27.5cm  
8mm PLEXIGLASS



## FOR-X 20CM

20 CM 20 LT CABINET  
[X-108 S]



## FOR-X 20CM

20 CM PRO MDF CABINET  
[X-408 / X-8 SPL]



## FOR-X 20CM

20 CM SLIM CABINET  
[X-308F]



## FOR-X 25CM

25 CM SLIM CABINET  
[XW-10F]



## FOR-X 30CM

30 CM MDF 65 LT CABINET  
[X-612]



## FOR-X 30CM

30 CM MDF 65 LT CABINET  
[X-612]



# CABINET

## FOR-X 30CM

30 CM CABINET  
[X-112S / XW-1212]



## FOR-X 30CM

30 CM SLIM CABINET  
[X-3012]



## FOR-X 30CM

30 CM MDF 65 LT CABINET  
[X-120 / X-312 / X-412 / X-512]



## FOR-X 38CM

38 CM PRO MDF CABINET  
[X-150 / X-152 / X-315 / X-415 / X-615]



## FOR-X 38CM

38 CM 75 LT CABINET  
[XW-1215]



## MOBASS 20CM

20 CM 20 LT CABINET  
[MB-108 / MB-208]



## MOBASS 30CM

30 CM MOBASS MDF CABINET  
[MB-2512]



## BUROCK 25CM

25 CM BUROCK CABINET  
[BR-10]



# CABLE & ACCESSORIES

## X-2PRS PRO

18GA OFC SPEAKER CABLE  
TWO PAIRS OF NOISE  
REJECTING TWISTED  
CABLE WITH SLEEVE  
50MT



## X-4PRS PRO

18GA OFC SPEAKER CABLE  
FOUR PAIRS OF NOISE  
REJECTING TWISTED  
CABLE WITH SLEEVE  
50MT



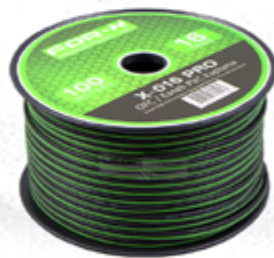
## X-00 PRO

0 GA POWER CABLE  
COPPER OFC CABLE  
15.25MT



## X-016 PRO

16 GA SPEAKER CABLE  
COPPER OFC CABLE  
100MT



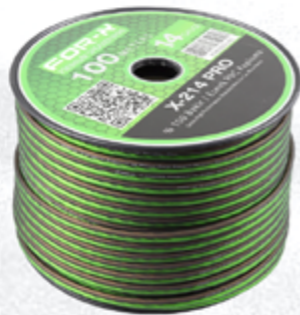
## X-02 PRO

2 GA POWER CABLE  
COPPER OFC CABLE  
20MT



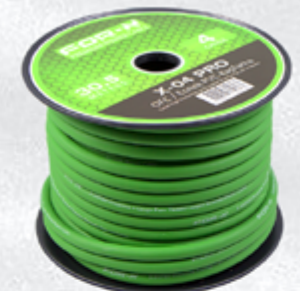
## X-214 PRO

14 GA SPEAKER CABLE  
COPPER OFC CABLE  
100MT



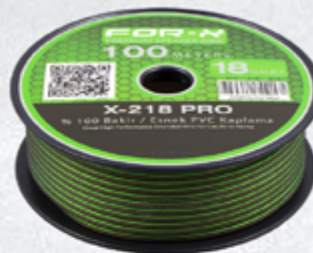
## X-04 PRO

4 GA POWER CABLE  
COPPER OFC CABLE  
30.5MT



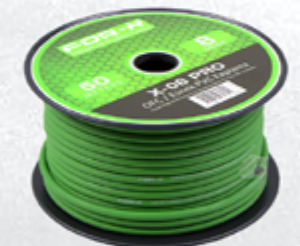
## X-218 PRO

18 GA SPEAKER CABLE  
COPPER OFC CABLE  
100MT



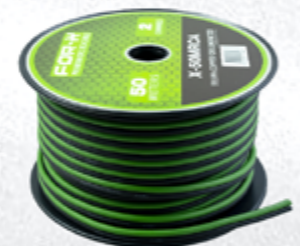
## X-08 PRO

8 GA POWER CABLE  
COPPER OFC CABLE  
50MT



## X-50M RCA

2 CH RCA CABLE  
COPPER OFC CABLE  
50MT



## X-012 PRO

12 GA SPEAKER CABLE  
COPPER OFC CABLE  
50MT



## X-014 PRO

14 GA SPEAKER CABLE  
COPPER OFC CABLE  
50MT

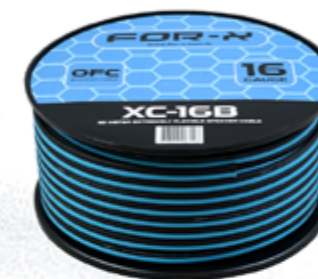


# CABLE & ACCESSORIES



## XC-0B

0 GA POWER CABLE  
PREMIUM FLEXIBLE PURE TINNED OFC  
15.25MT



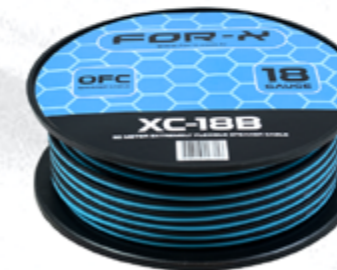
## XC-16B

6 GA SPEAKER CABLE  
EXTREMELY FLEXIBLE OFC  
50MT



## XC-2B

2 GA POWER CABLE  
PREMIUM FLEXIBLE PURE TINNED OFC  
12MT



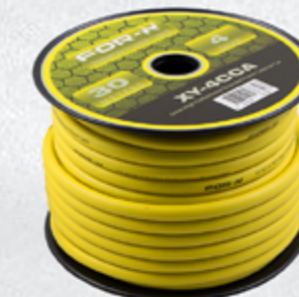
## XC-18B

18 GA SPEAKER CABLE  
EXTREMELY FLEXIBLE OFC  
50MT



## XC-4B

4 GA POWER CABLE  
PREMIUM FLEXIBLE PURE TINNED OFC  
30.5MT



## XY-4CCA

4 GA POWER CABLE  
GREAT HIGH PERFORMANCE  
STRANDED CCA  
30MT



## XC-8B

8 GA POWER CABLE  
PREMIUM FLEXIBLE PURE TINNED OFC  
50MT



## XY-6CCA

6 GA POWER CABLE  
GREAT HIGH PERFORMANCE  
STRANDED CCA  
50MT



## XML-16G/P/W/A

16GA OFC SPEAKER CABLE  
TWO PAIRS OF NOISE REJECTING  
TWISTED CABLE  
100MT



# CABLE & ACCESSORIES

## XY-8CCA

8 GA POWER CABLE  
GREAT HIGH PERFORMANCE  
STRANDED CCA  
50MT



## XY-6KIT

4.5MT 6 GA POWER CABLE  
0.6MT 6 GA GROUND CABLE  
5MT RCA CABLE  
10MT 16 GA SPEAKER CABLE  
5MT REMOTE CABLE  
80A FUSE



## XY-12CCA

12 GA SPEAKER CABLE  
GREAT HIGH PERFORMANCE  
STRANDED CCA  
50MT



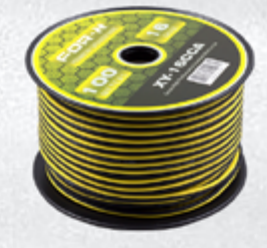
## XY-8KIT

4.5MT 8 GA POWER CABLE  
0.6 MT 8 GA GROUND CABLE  
5MT RCA CABLE  
10MT 16 GA SPEAKER CABLE  
5MT REMOTE CABLE  
60A FUSE



## XY-16CCA

16 GA SPEAKER CABLE  
GREAT HIGH PERFORMANCE  
STRANDED CCA  
100 MT



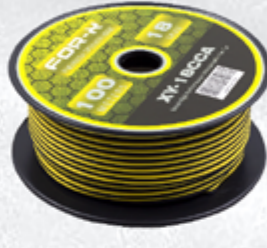
## XC-4 OFC

4.5MT 4 GA POWER CABLE  
0.6MT 4 GA GROUND CABLE  
5MT RCA CABLE  
10MT 16 GA SPEAKER CABLE  
5MT REMOTE CABLE  
100A FUSE



## XY-18CCA

18 GA SPEAKER CABLE  
GREAT HIGH PERFORMANCE  
STRANDED CCA  
100 MT



## XC-8 OFC

4.5MT 8 GA POWER CABLE  
0.6MT 8 GA GROUND CABLE  
5 MT RCA CABLE  
10MT 16 GA SPEAKER CABLE  
5MT REMOTE CABLE  
80A FUSE



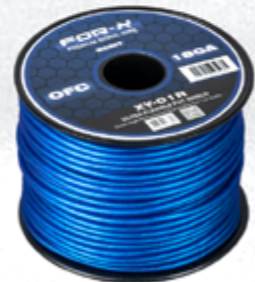
## XY-4KIT

4.5MT 4 GA POWER CABLE  
0.6MT 4 GA GROUND CABLE  
5MT RCA CABLE  
10MT 16 GA SPEAKER CABLE  
5MT REMOTE CABLE  
100A FUSE



## XY-01R

18 GA SIGNAL WIRE  
50MT



# CABLE & ACCESSORIES



**AK-XX-06**  
METAL RCA PLUG



**AK-XX-07**  
METAL RCA PLUG



**AK-XX-08**  
METAL RCA PLUG



**AK-XX-09**  
METAL RCA PLUG  
**AK-XX-08**  
METAL RCA PLUG



**XABT-0**  
0 GA TERMINAL



**XABT-4**  
4 GA TERMINAL



**XY-54T**  
RCA SPLITTER



**X-1122G**  
1-2-5MT RCA CABLE



**X-1122L**  
5MT HI-END RCA CABLE



**X-1144**  
5MT 4CH Black Matt Spiral RCA Cable  
with AL Foil Shielding



**MAESTRO-25**  
HI-END GRADE RCA CABLE  
ULTRA FLEXIBLE PVC COVER  
99.99% COPPER FOR CONDUCTOR  
COLOR CODED CONNECTORS  
HIGH SIGNAL TRANSDUCER  
5MT

**XY-21RCA**  
GOLD PLATED TIP  
1 FEMALE 2 MALE Y CABLE  
SIGNAL NOISE ELIMINATED



**XY-21RCA**  
GOLD PLATED TIP  
2 FEMALE 1 MALE Y CABLE  
SIGNAL NOISE ELIMINATED



EVERYTHING  
YOU NEED





# CABLE & ACCESSORIES



## XHL-66PRO

6 CHANNEL LINE OUTPUT CONVERTER  
 MAXIMUM SPEAKER-LEVEL INPUT : 60W @ 4 OHM  
 MAXIMUM OUTPUT LEVEL : 9.5V RMS  
 OUTPUT GAIN : +/-12dB  
 FREQUENCY RESPONSE : 10HZ-22KHZ  
 TOTAL HARMONIC DISTORTION : 0.01%  
 INPUT IMPEDANCE : 180 OHMS  
 POWER SUPPLY : HIGH HEADROOM PWM SWITCHING  
 POWER DRAW : 200MA  
 RECOMMENDED FUSE RATING : 1 AMP  
 REMOTE TRIGGER OUTPUT CURRENT : 1 AMP MAX



## MBQ-6

POWER SUPPLY : 11-15V DC NEG. GROUND  
 MAX. OUTPUT VOLTAGE : 8V RMS  
 PRE GRAPHIC FREQUENCY : 50Hz,150Hz, 500Hz, 2KHz, 16KHz  
 EQUALIZATION RANGE : +/-12 dB  
 SUBWOOFER FREQUENCY : 43-120Hz ,60-200Hz  
 INPUT IMPEDANCE : 15K OHMS  
 S/N RATIO : 80 dB  
 T.H.D. : 0.05%  
 CHANNEL SEPARATION : 70 dB  
 FREQUENCY RESPONSE : 10Hz-50KHz [-3dB]



## XHL-144

4CH HIGH TO LOW CONVERTER

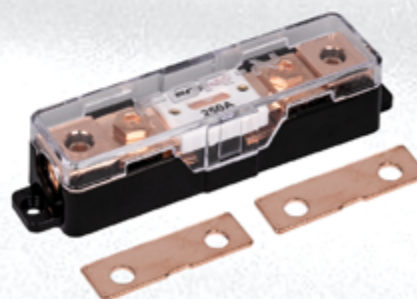
## X-052

METAL INSTALLATION TOOL  
 [52 SET]



## X-110

PLASTIC INSTALLATION TOOL  
 [11 SET]



## XANL-250AP++

FUSE HOLDER WITH 250A ANL FUSE  
 0/2/4 Gauge Adapter | without adapter => 0 GA  
 250A ANL Ceramic Fuse  
 Pure Copper Hardware  
 High Temperature Resistant Cover  
 High Temperature Resistant Housing  
 2x Copper Bar



# CABLE & ACCESSORIES



## XFP-04

FUSE HOLDER AND DIGITAL VOLTMETER  
 2 GA 1x IN  
 2 GA 1x OUT



## XANL-1

150A FUSE  
 0 GA 1x IN  
 0 GA 1x OUT



## XVP-01

DISTRIBUTION BLOCK  
 0 GA 2x IN (+) / 0 GA 4x OUT (+)  
 0 GA 2x IN (-) / 0 GA 4x OUT (-)



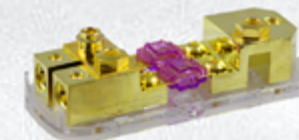
## XFP-02

DISTRIBUTION BLOCK  
 0 GA 3x IN  
 0 GA 2x OUT



## XAFS-2

150A DISTRIBUTION BLOCK  
 2 GA 1x IN  
 4 GA 2x OUT



## XFP-03

DISTRIBUTION BLOCK  
 0 GA 1x IN  
 0 GA 2x OUT



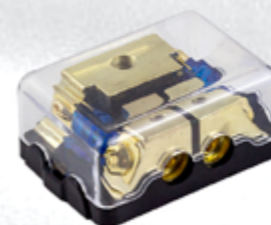
## XAFS-1

150A DISTRIBUTION BLOCK  
 2 GA 1x IN  
 2 GA 1x OUT



## XFP-25A

25A NOISE FILTER



## XAFS-22

DISTRIBUTION BLOCK  
 2 GA/4 GA IN  
 4 GA OUT



## XFP-50A

50A NOISE FILTER

# CABLE & ACCESSORIES



**XGP-05**  
DISTRIBUTION BLOCK  
0 GA 2x IN  
2 GA 4x OUT



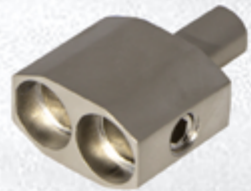
**X-68**  
80A FUSE  
4 GA 1x IN  
4 GA 1x OUT



**BTA-44**  
AMPLIFIER TERMINAL  
4 GA IN  
4 GA OUT



**XHL-22**  
2CH CONVERTER



**BTA-00**  
AMPLIFIER TERMINAL  
1/0 - 1/0 GA IN  
1/0 GA OUT



**XHL-44**  
4CH CONVERTER



**XANL-100A, XANL-150A,  
XANL-200A, XANL-250A,  
XANL-300A**  
100A, 150A, 200A,  
250A, 300A FUSE



**X-122**  
2CH CONVERTER



**X-F100A**  
100A FUSE  
4 GA 1x IN  
4 GA 1x OUT



**X-Q222**  
NOISE FILTER

# CABLE & ACCESSORIES



**X-20TDU**  
TIME DELAY UNIT



**XVM-28**  
DIGITAL VOLTMETER



**TERMINAL**  
CABINET TERMINAL  
80x80mm



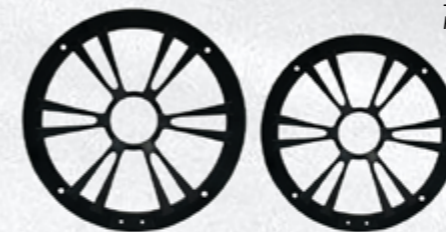
**X-351**  
CMOS MINI



**X-730 IR**  
CMOS MINI  
(NIGHT VISION)



**X-352**  
CMOS [PYRAMID]



**16-20CM**  
16CM & 20CM  
PLASTIC GRILL



**X-934**  
CCD BMW

**X-1719ASV**

2017-2018 VW C-TRAK, 2017-2018 VW Tiguan,  
2017-2018 VW Teramont, 2016- 2017 VW Touran  
2017-2018 SKODA Octavia, 2017-2018 SKODA KAMIQ  
Audi 2017-2018 2019 A4L, Audi 2017-2018 Q7,  
Audi 2017-2018 Q5, 2017-2018 Audi A3



**X-1719PASV**

2019 New VW Passat, 2019 SKODA,  
2017/2018 KODIAQ, 2018 KAROQ  
Audi 2017/2018 A5, Audi 2018 Q2L,  
Audi 2018 Q5L, Audi 2017/2018 Q2,  
Porsche 2018 Cayenne

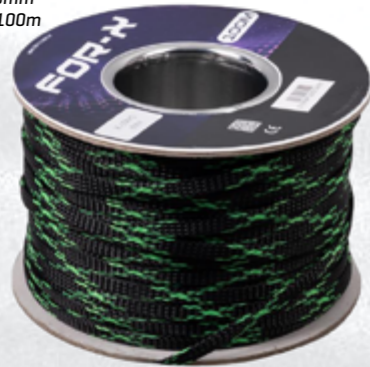


# CABLE & ACCESSORIES



## X-106 YS/SKS/KS

CABLE SOCKS  
EXTENT: 6mm  
LENGTH: 100m



## X-110 YS/SKS/KS

CABLE SOCKS  
EXTENT: 10mm  
LENGTH: 100m



## X-120 YS/SKS/KS

CABLE SOCKS  
EXTENT: 20mm  
LENGTH: 100m  
COLOR: GREEN-BLACK



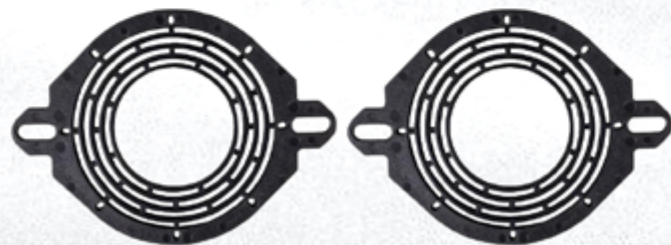
## XPD-6.5R

SUITABLE FOR 6-6.5 INCH SPEAKERS  
MATERIAL : FOAM  
DIAMETER : 19.5CM / 7.68IN  
INNER DIAMETER : 14.5CM / 5.71IN  
HEIGHT : 2.5CM / 0.98IN  
PACKAGE INCLUDES : 1 x INSULATION RING



## XTF-77M

SUITABLE FOR  
2-3.5" TWEETER



## XTF-50M

MULTI FUNCTION SPEAKER  
ADAPTER 1-2" TWEETER



# CABLE & ACCESSORIES

## XYP-POD2

PILLAR POD FOR SPEAKERS



## XYP-POD1

PILLAR POD FOR SPEAKERS



## XYP-POD3 AL

PILLAR POD FOR SPEAKERS  
Machined with Lathe  
Material: AL



## XYP-POD4 CNC

PILLAR POD FOR SPEAKERS  
Machined with CNC  
Material: AL



## XBF-6.5S1

6.5" SPEAKER BAFFLE KITS  
FITS 6" & 6.5" SPEAKERS



## XBF-6.5S2

6.5" SPEAKER BAFFLE KITS  
FITS 6" & 6.5" SPEAKERS





FOR-X

BuRock

MoBass

CERTIFIED QUALITY



GLOBAL  
CAR AUDIO  
BRANDS

CONTACTS

Headquarter: H. Okan Merzeci Mah.  
Akbelen Blv. 179/A  
Toroslar Mersin / TURKEY

Branch: Mahmutbey Mah. Istoc Ticaret  
Merkezi 2454 Sok. 34. Ada No: 20  
Bagcilar Istanbul / TURKEY

Technical Support : +90 537 293 46 30  
General Questions : +90 444 2 567  
International Call : +90 537 489 37 18

Web : [www.theaudiocar.com](http://www.theaudiocar.com)  
E-mail : [info@theaudiocar.com](mailto:info@theaudiocar.com)  
Social : theaudiocar



C A R   A U D I O   S Y S T E M S



[www.theaudiocar.com](http://www.theaudiocar.com)