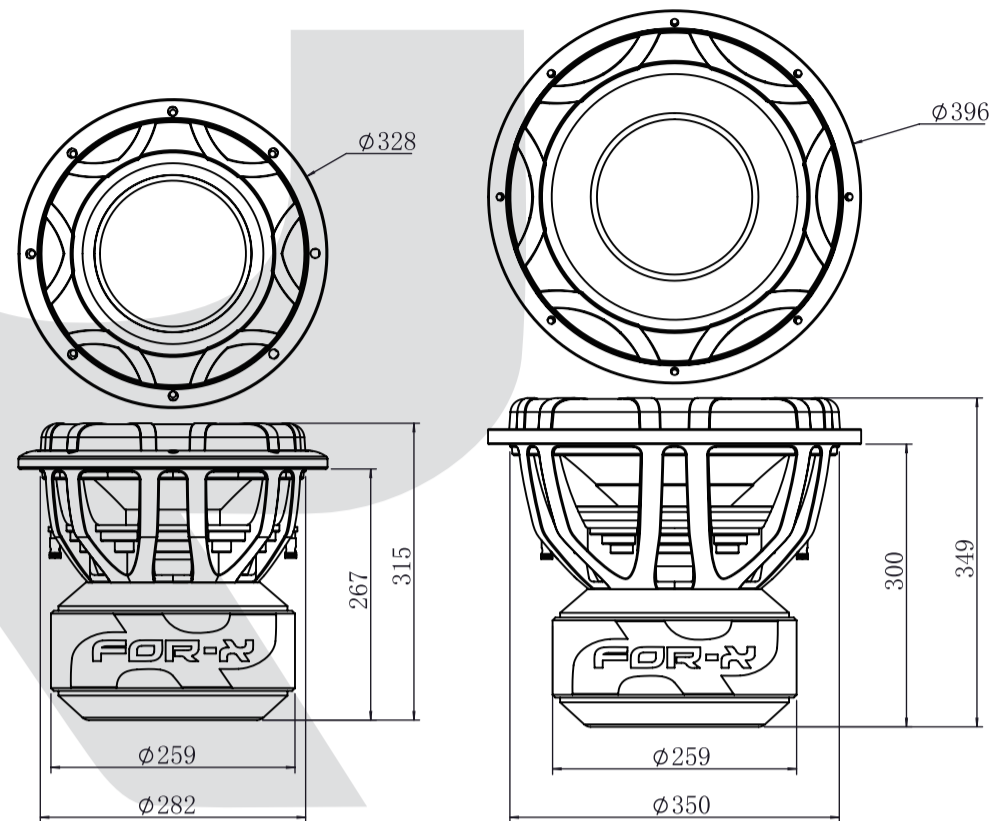


FOR-N

XW-124 XW-154

Owner's Manual

Dimensions

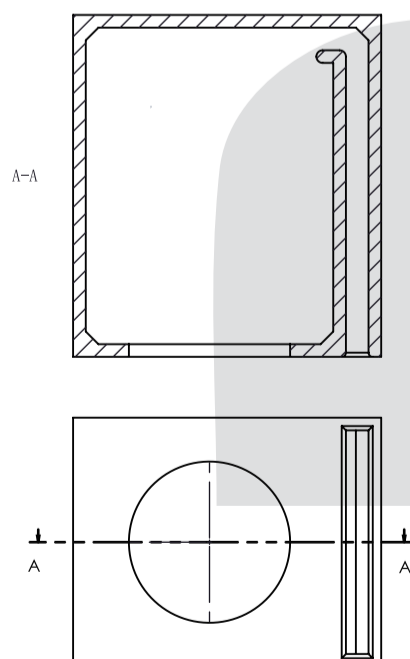


XW-124 SIZE

XW-154 SIZE

Recommended sealed enclosure informations

Model	Subwoofer Displacement (cu.ft)	Enclosure Volume(cu.ft) (net enclosure volume)	Tuning Frequency (Hz)
XW-124	0.45	1.8-2.61	31
XW-154	0.71	2.11-3.3	30



Vented box for reference

Sealed enclosure not recommended!

Specifications

General Data		XW-124D1	XW-124D2	XW-154D1	XW-154D2
Overall Dimensions	mm	328*315		396*349	
Nominal Power Handling	W	4000			
Transient Power 10ms	W	8000			
Sensitivity	dB	84.5	84.5	86.6	87.1
Frequency Response	Hz	35-300	36-300	33-300	34-300
Cone Material		PAPER			
Net Weight	kg	42.1		43.2	
Electrical Data					
Nominal Impedance	Ohm	Dual 1	Dual 2	Dual 1	Dual 2
DC Resistance	Ohm	Dual 0.75	Dual1.4	Dual 0.75	Dual1.4
Voice Coil and Magnet Parameters					
Voice Coil Diameter	mm	99.3			
Voice Coil Height	mm	83.8			
HE Magnetic Gap Height	mm	35			
Max.Linear Excursion	mm	24.4 (One way)			
Voice Coil bobbin		Black Aluminium			
Voice Coil Wire		Flat Aluminium			
Number Of Layers	layers	4			
Magnet System Type		Ferrite			
BL Product	N.A	17.84	26.4	18.35	26.8
T-S Parameters					
Resonant Frequency	Fs	35	36	33	34
Moving Mass	Mms	480.5	471.7	545.29	538.6
Suspension Compliance	Cms	0.04	0.03	0.04	0.04
Mechanical Q Factor	Qms	3.87	3.49	3.87	3.52
Electrical Q Factor	Qes	0.47	0.45	0.51	0.46
Total Q Factor	Qts	0.42	0.4	0.45	0.41
Eq.Cas Air Load(liters)	VAS	16.2	13.4	40.65	40.1
Effective Piston Area(cm ²)	SD	510.7		829.5	
Connection:		Series	Parallel	Series	Parallel