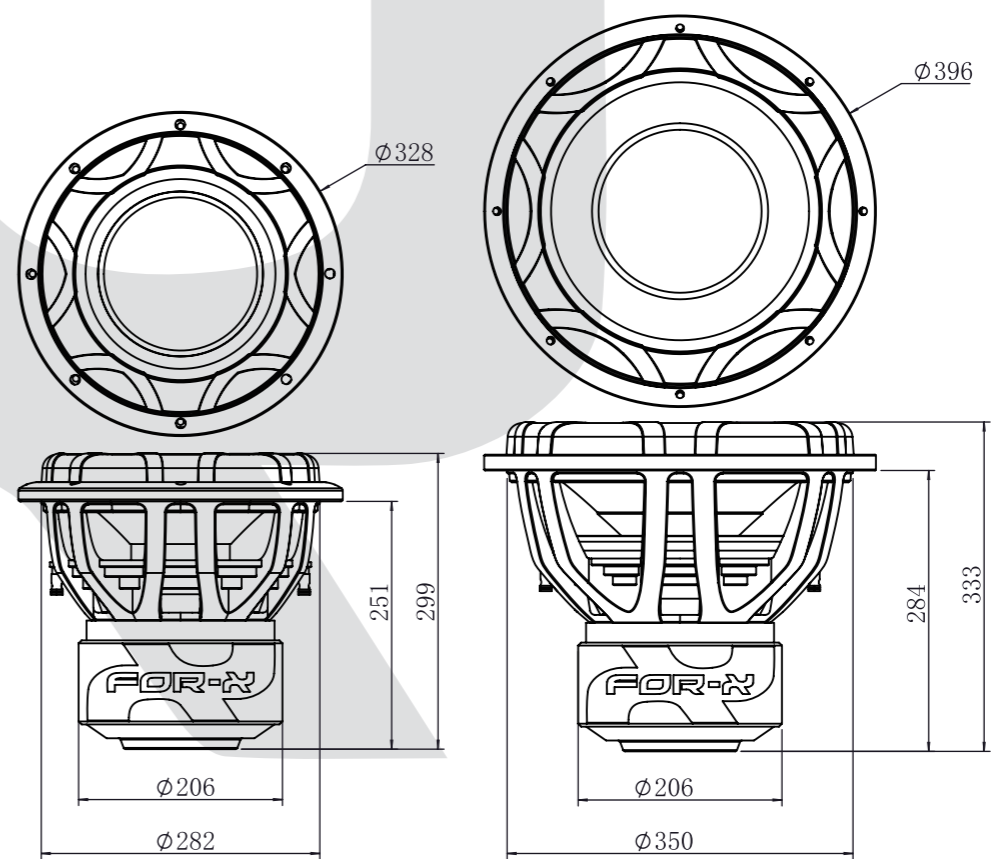


# FOR-N

## X-MAX12 X-MAX15

### Owner's Manual

#### Dimensions

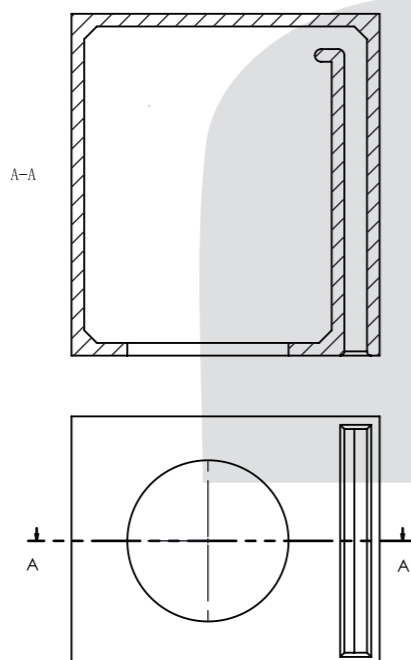


X-MAX12 SIZE

X-MAX15 SIZE

#### Recommended sealed enclosure informations

Model	Subwoofer Displacement (cu.ft)	Enclosure Volume(cu.ft) (net enclosure volume)	Tuning Frequency (Hz)
X-MAX12	0.41	1.7-2.55	32
X-MAX15	0.68	2.10-3.0	31



Vented box for reference

Sealed enclosure not recommended!

#### Specifications

General Data		X-MAX12D1	X-MAX12D2	X-MAX15D1	X-MAX15D2
Overall Dimensions	mm	328*299		396*333	
Nominal Power Handling	W	2500			
Transient Power 10ms	W	5000			
Sensitivity	dB	84.5	84.3	87.2	87.1
Frequency Response	Hz	38-300	39-300	31-300	34-300
Cone Material		PAPER			
Net Weight	kg	23.95		25.1	
Electrical Data					
Nominal Impedance	Ohm	Dual 1	Dual 2	Dual 1	Dual 2
DC Resistance	Ohm	Dual 0.75	Dual1.4	Dual 0.75	Dual1.4
Voice Coil and Magnet Parameters					
Voice Coil Diameter	mm	76.5			
Voice Coil Height	mm	75			
HE Magnetic Gap Height	mm	25			
Max.Linear Excursion	mm	25 (One way)			
Voice Coil bobbin		Black Aluminium			
Voice Coil Wire		Flat Aluminium			
Number Of Layers	layers	8			
Magnet System Type		Ferrite			
BL Product	N.A	22.48	25.52	21.9	24.9
T-S Parameters					
Resonant Frequency	Fs	38	39	31	30
Moving Mass	Mms	525.8	515.6	614.2	570.5
Suspension Compliance	Cms	0.02	0.03	0.05	0.04
Mechanical Q Factor	Qms	3.12	3.53	4.04	3.89
Electrical Q Factor	Qes	0.39	0.48	0.43	0.49
Total Q Factor	Qts	0.35	0.42	0.4	0.46
Eq.Cas Air Load(liters)	VAS	13.5	12.9	54.6	56.3
Effective Piston Area(cm <sup>2</sup> )	SD	510.7		829.5	
Connection:		Series	Parallel	Series	Parallel

